



GCP

**GCP Projects SA (Pty) Ltd**

*“Excellence through Commitment”*





GCP

# GCP Projects SA (Pty) Ltd

## INTRODUCTION

GCP Projects SA (Pty) Ltd was formed in 1982 and has been active in the building industry in South Africa for over 32 years. Due to the Company's long-standing policy of commitment to service, execution to the highest possible standards of perfection / quality, the awareness of the importance of achieving high levels of productivity and our dedication to the timeous completion of our projects, our Company enjoys a high referral rate with much of our work being secured through the process of negotiation.

From the inception of our Company, our involvement in the industry has changed from one of purely Building Contractors to Building and Civil Contractors, Property Developers and Project Managers and Turnkey Operators.

## LOCATION

GCP Projects SA (Pty) Ltd head office is based at Maxmead, Pinetown in the Romead Business Park.

## TARGET MARKET

We list a few examples of the projects constructed by our company in each of the building categories hereunder as an indication of our exposure to each of these markets:-

### 1. Residential Buildings

- Medium and High Rise Apartment Blocks.
  - Oyster Breeze Apartments Westbrook Beach.
  - Sandwood Hills Apartment Blocks in the Dunkirk Estate.
  - Lighthouse Mall Penthouse Apartments in Umhlanga Rocks.
  - Balooga Bay Apartments in Margate.
  - Kuta Beach Apartment Blocks in Margate.
  - Ilala Palms Apartment Block on the Umhlanga Ridge.
  - Kingfisher Apartment Blocks at St Michaels on Sea.
  - Es Paradis Apartment Blocks at La Mercy.
  - Tiger View Apartment Blocks at Riverhorse Valley.
  - Corals on Campbell Apartments in Umhlanga Rocks.
  - Glitter Bay Apartments Umhlanga Beach Front.
  - 30 Units at the Caribbean Estates in Port Edward.

- Low Rise Middle Market and Up Market Housing Schemes.
  - Jabulani Luxury Residential Development at 37 Marine Drive in Umhlanga Rocks.
  - Savannah Retirement Village in the Simbithi Eco Estate.
  - 39 Units at The Sanctuary in the Zimbali Estate.
- High Value Individual Residential Homes.
  - House Ghizleni in Zinkwazi.
  - House Arcache in Kamberg.

## 2. Industrial Buildings

- Warehouses, Related Offices and Ancillary Structures.
  - 47000m<sup>2</sup> Warehouse and Offices for Mercedes Benz in Pinetown.
  - Warehouse for Grafton Everest and Canelands.
  - Warehouse and Offices for EGA Properties in Shepstone Road, Durban.
  - Warehouse and Offices for Geemay Properties in Point Road, Durban.
  - 7000m<sup>2</sup> Warehouse and Offices for Geda Romead Properties (Pty) Ltd.
  - Warehouse and Offices for Geda Romead Investments (Pty) Ltd.
  - Warehouse and Offices for Geda Airport City (Pty) Ltd (Cape Town).
  - Warehouse and Offices for Geda Aeroport (Pty) Ltd (JHB).
  - Warehouse and Offices for Geda Spartan (Pty) Ltd (JHB).
  - Warehouse and Offices for Geda Sheffield Park (Pty) Ltd (Cape Town).
  - Part Warehouse for Toyota at Southgate Industrial Park.
  - Warehouse, Showroom and Offices for Union Tiles in Ballito.
  - Warehouse and Offices for National Edging in Pinetown.
  - Warehouse and Offices for Rodev Trust occupied by DeLaval (Pty) Ltd.
  - Warehouse and Offices for Ace Packaging at Southgate Industrial Park.
  - Warehouse and Offices for UTI Mounties in The Romead Business Park.
  - Warehouse and Offices for Distell in Pietermaritzburg and Pinetown.
- Factories, Related Offices and Ancillary Structures.
  - Factory and Offices Greaves & Thomas in Mt Edgecombe.
  - Factory and Offices for Reutech in New Germany.
  - Factory and Offices for Alpine Lounge at Tygerberg Business Park (Cape Town).
  - Factory and Offices for Atlantic Cape International (Pty) Ltd in Pinetown.
- Specialised Industrial buildings, Related Offices and Ancillary Structures.
  - Food Processing Facilities.
    - Pakco Pickling Plant in Verulam, Durban.
    - Etlin International (Pty) Ltd in Durban.
    - Braviz Fine Foods (Pty) Ltd Cosmo Business Park, JHB.
    - Premier Meat Products (Pty) Ltd Romead Business Park, Pinetown.

- Cold Stores for the Fruit Industry - Chilled Market.
  - Ethekwini Cold Stores Prospecton, Durban.
  - Fresh Produce Terminal Durban Harbour.
  - Bayhead Cold Storage, Durban.
  - Maydon Wharf Fruit Terminal, Durban.
  - Commercial Cold Storage, Durban.
  - Ellmans Cold Storage Maydon Wharf, Durban.
- Cold Storage for the frozen Food Market.
  - Blue Continent Cold Storage Bayhead, Durban.
  - Big Catch Fisheries at Richards Bay.
  - Rainbow Chickens at Hammersdale.
  - Vector Logistics at Redhill, Durban.
  - Commercial Cold Storage Bayhead, Durban.
  - Ayoba Cold Storage Cato Manor, Durban.
  - Etlin International (Pty) Ltd Table Harbour, Cape Town.
  - Etlin International (Pty) Ltd City Deep, JHB.
  - Etlin International (Pty) Ltd Clairwood, Durban.
  - Chester Wholesale Meats Davey Road, Durban.
  - Renown Fresh Meats Maydon Wharf, Durban.

### 3. **Retail Buildings**

- ➔ New Shopping Centres as well as Upgrades and Refurbishments of Shopping Centres.
  - Westville Shopping Centre for Acucap, Durban.
  - Lighthouse Shopping Mall, Umhlanga Rocks.
  - Alterations and Additions to Pick n Pay Queensburgh, Durban.
  - Alterations and Additions to Pick n Pay Hayfields, Pietermaritzburg..
  - Builders Trade Depot, Amanzimtoti.
  - China Mall at the Wheel, Durban.
  - Makro Springfield Park, Durban.
  - Cambridge Foods, Pinetown.
  - Edgars Church Street, Pietermaritzburg.
  - Sales House Church Street, Pietermaritzburg.
- ➔ New Motor Dealerships & Transport Industry as well as Upgrades and Refurbishments of Motor Dealerships.
  - Nissan Dealership/Engen Garage, Waterfall.
  - Tyco International Truck Workshops and Offices Marianhill, Pinetown.
  - Tyco International Truck Workshops and Offices Kraaifontein, Pinetown.
  - The Toyota Car and Truck Showrooms, Offices and Workshops, Shelley Beach.
  - Tyre Store for Toyota in the Southgate Industrial Park.
  - Shell Garage, Amanzimtoti.
  - Extensions to Natal Motor Industries Dealership, Umhlanga Rocks.
  - New Vehicle Storage Facility and Office Block for Auto Carriers in Southgate Industrial Park.
  - New Vehicle Storage Facility and Office Block for the Imperial Vehicle Logistics in Marianhill.
  - Shell Garage Florida Road, Durban.

- New Workshops and General Facility Buildings at Tanker Services Mobeni, Durban for the Imperial Group.
- New Auto Repair Centre for Farber Coach Works in the Sheffield Business Park, Cape Town.

#### 4. **Commercial Buildings**

- ➔ Medium and High Rise Office Blocks.
  - New Offices 81 Chapel Street, Pietermaritzburg.
  - New Office Block 169 – 171 Berg Street, Pietermaritzburg.
  - New Office Block 203 Berg Street, Pietermaritzburg.
  - New Office Block for SARS at 220 Berg Street, Pietermaritzburg.
  - Office Block 221 Pietermaritz Street, Pietermaritzburg.
  - New Office Block, Ancillary Building for Eskom, Mkondeni.
  - Knightsbridge Office Building Westville Road, Westville.
  - New Offices and General Facilities for Bates Technology in Riverhorse, Durban.
  - New Offices for GM Arcache Shipping Bay Terrace, Durban.
  - New Head Office for Metier Concrete in the Romead Business Park, Pinetown.
  - New Offices and Showroom for Kingspan International, Pinetown.
  - New Offices and General Facilities for Lion Match in Mahatma Gundhi Road, Durban.
- ➔ Single Level Office Buildings.
  - Peach and Hatton Office Block Mt Edgecomb, Durban.
  - The Dunkirk Estate Office Building and Club House Building North Coast, Durban.

#### 5. **Hospitals**

- ➔ New Hospitals as well as Upgrades and Refurbishments of Hospitals.
  - Kingsway Hospital, Amanzimtoti.

#### 6. **Specialised Buildings**

- ➔ Religious Facilities, Restaurants and MTN Network Switching Facilities.
  - Alteration and Additions to the Pinetown Catholic Church.
  - Alterations and Additions to St Michaels Anglican Church, Umhlanga Rocks.
  - New McDonald Restaurants in Old Fort Road Durban, Pinetown, Richards Bay, Mt Edgecombe, Malvern, Amanzimtoti, Bluff, Shallcross and Gateway Shopping Centre.
  - Butcher Boys, Umhlanga Rocks.
  - GCP was responsible for the construction of the MTN switching facilities and offices in Pinetown.

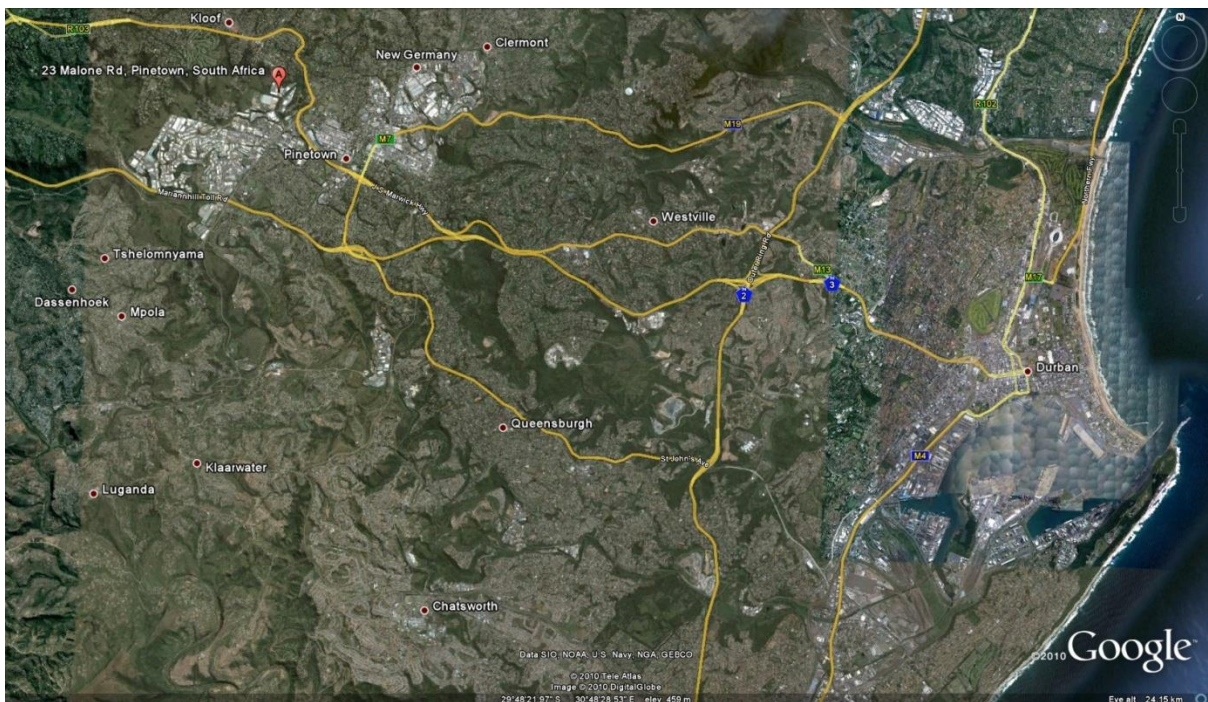
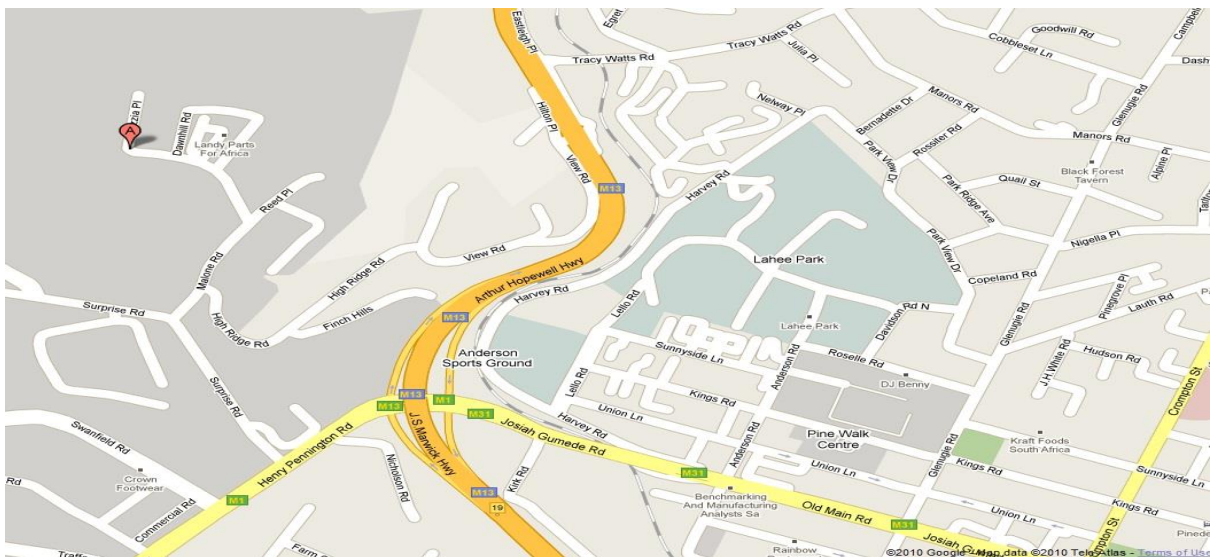
#### 7. **Civils Work**

- ➔ Unilever Soap Factory Maydon Wharf, Durban.
- ➔ Unilever Foods Ablution Building Maydon Wharf, Durban.
- ➔ The Romead Business Park Civils Infrastructure Work, Pinetown.

## 8. Industrial Business Parks.

- Romead Business Park:- GCP have developed a 24 hectare Industrial Business Park known as the Romead Business Park and this Business Park will be the home of sixteen tenants housed on twelve new building within this business park. Nine of these building have already been completed in this up market Business Park.

## LOCALITY MAPS



## DIRECTORS & SHAREHOLDERS

	Directors	Share-Holders	Qualification	Length of Service with GCP
Tybiro Trust (R L van der Walt's Family Trust)		X		
Rodney van der Walt (Chief Executive Officer)	X		BSc (Bldg) CIOB	33 years
Vernon van Wyk (Managing Director)	X	X	Nat Higher Dipl QS	23 years
Johan Klaasen (Contracts Director)	X	X	Nat Dipl Bldg	25 years
Raj Govender (Site Operations Director)	X	x	NTC 4	33 years
Denis Robert (Director in charge of Quantity Surveying Department)	X	X	BSc (QS)	32 years
A Sonbadhar (Senior Site Manager)		X	Master Craftsman	32 years
Raj Singh (Senior Site Manager)		X	Master Craftsman	20 years
Vincent Meth (Senior Finishing Foreman)		X	Master Craftsman	10 years
Ashok Rama (Plant, Transport & Workshop Manager)		X	Diploma – Stores and Warehousing	7 years
Marlon Green (General Foreman)		X	NTec Diploma – Site Supervisor	8 years
Shane Peter (General Foreman)		X	NTec Diploma – Site Supervisor	8 years

### **Departments within GCP Project SA (Pty) Ltd**

The company has competently staffed in-house departments responsible for the following functions:-

- **Contract Management Department:** - This department is managed by Johan Klaasen our Contract Director and the employees in this department are qualified with either a BSc Building Degree or a National Diploma in Building.
- **Contract Finance Control & Quantity Surveying Department:** - This department is managed by Denis Robert and the staff employed have either a BSc in Quantity Surveying or a National Higher Diploma in Quantity Surveying.
- **Cost Management & Accounts Department:-** This department encompasses the employment of Bianca Potter qualified accountant BComm (Hons), Logash Naidoo – BComm (Hons) and Tylisha Sadler – Degree in Finance and Business Management as well as debtors and creditors staff.
- **Transport, Workshop and Plant & Equipment Department:-** This department is managed by Ashok Rama who has a Diploma in Warehouse Management and has vast experience regarding the management of construction plant, equipment and transportation. All the

operators of trucks and specialised construction equipment are properly trained and certificated.

- Department of Health & Safety:- The company employs a full time Safety Manager responsible for the maintenance and monitoring of safety procedures within the company as well as a full time Safety Training Officer who executes the necessary “Tool Box Talks” and other safety programmes that are conducted on all our sites. On our larger sites we also employ full time Site Safety Officers.

### **General**

Our Company believes in employing Directors and Management who have the appropriate qualifications to ensure effective management of the Company and the work undertaken by it. Our site supervisory staff are all directly employed by our company, most of whom have a long service history, many of them in excess of 25 years.

We attach a lot of importance to our supervisory staff, particularly in view of the current trend to outsource most of the trades to specialist sub-contractors. This trend has made it more crucial, than ever before, to ensure that these outsourced specialists are correctly managed and supervised in order to maintain quality standards.

GCP 's associated plant hire company hires plant and equipment with a new replacement value of R35 million exclusively to GCP. The plant company continually upgrades its building plant and equipment and this equipment includes tower cranes, mobile cranes, platform and gantry hoists, mechanical teleporters and material handling machines, front-end loaders, tractor digger loaders, unloaders/bobcats, mechanical dumpers, concrete batching plants, scaffolding & formwork systems. GCP's access to this plant and equipment ensures it's ability to execute its contracts efficiently at all times and reduces the company's reliance on the hiring of plant which may not be immediately available from third parties.

Our exposure to the Building Industry in South Africa has been extensive, in all categories of building, and we welcome new challenges that will extend our level of expertise. We are confident that GCP's expertise will be beneficial to any project that our company may undertake and would be grateful to be given an opportunity to be involved in up and coming projects.

## **CONTACT DETAILS**

Should there be any queries with regard to GCP Projects SA (Pty) Ltd, please contact

*Mr Rodney van der Walt on:* **Cell: 083 252 0841**  
**Tel: 031 713 1000 or**  
**031 713 8600**  
**Fax: 031 713 8650**

*Mr Vernon van Wyk* **Email: [Rodney@gcpsa.co.za](mailto:Rodney@gcpsa.co.za)**  
**Cell: 083 414 5866**  
**Tel: 031 7131000 or**  
**031 7138600**  
**Fax: 031 7138650**

**Email: [Vernon@gcpsa.co.za](mailto:Vernon@gcpsa.co.za)**

**“Excellence through Commitment”**



